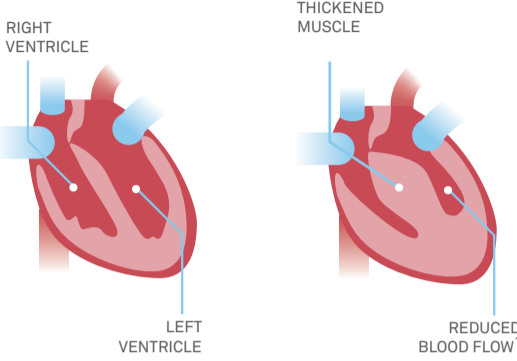


HCM

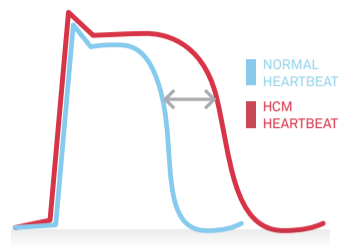
HYPERTROPHIC CARDIOMYOPATHY:
ABNORMAL THICKENING of HEART MUSCLE

NORMAL HEART

HEART WITH HCM

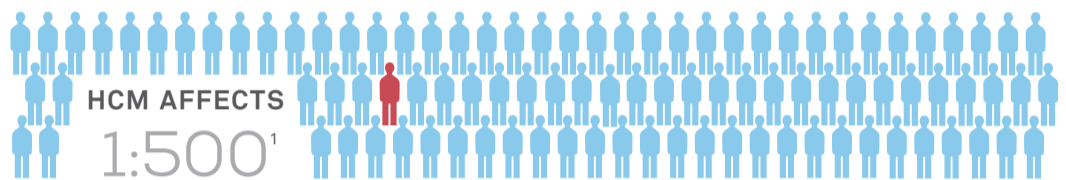


A normal heartbeat uses electrical signals in the form of sodium, potassium, and calcium currents.



In HCM, an increased late sodium current can prolong the electrical signal.² This can lead to abnormal heart rhythms.³

PREVALENCE and IMPACT of HCM



ALTHOUGH THE MAJORITY OF THESE DO NOT DEVELOP SYMPTOMS, HCM IS THE LEADING CAUSE OF SUDDEN CARDIAC DEATH IN PEOPLE UNDER 30¹

SYMPTOMS^{1,3}

Shortness OF BREATH



Fainting



(SYNCOPE)

Chest PAIN



Rapid HEART BEAT



(PALPITATIONS)

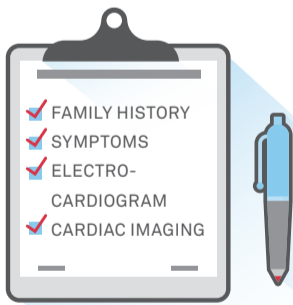
POTENTIAL CAUSES

GENETICS PLAYS A ROLE,

BUT ONLY **50-60%**

of families with HCM have a detectable mutation⁴

HOW is it DIAGNOSED?^{1,3}



TREATMENT OPTIONS^{1,3}

MEDICINES

HEART SURGERY



(SEPTAL MYECTOMY) REMOVAL OF THICKENED MUSCLE

IMPLANTED DEFIBRILLATORS



(ICDs)

NO FDA APPROVED MEDICINES



REFERENCES
 1. The Cleveland Clinic. *Hypertrophic Cardiomyopathy*. <http://my.clevelandclinic.org/heart/disorders/hcm/default.aspx>
 2. Coppini R, et al. *Circulation*. 2013 Feb 5;127(5):575-84.
 3. The Mayo Clinic. *Hypertrophic Cardiomyopathy*. <http://www.mayoclinic.org/diseases-conditions/hypertrophic-cardiomyopathy/basics/definition/con-20030747>
 4. Christiaans I, et al. *Eur Heart J*. 2010 Apr;31(7):842-8.